



INSECT CONTROL



NOVIL 76 EC

NOVIL 76% E.C. is a stomach contact and Fumigant action emulsifiable concentrate formulation based on Dichlorovos technical as 76% A.I. W/W

RECOMMENDATIONS : For the control of pest in wheat, paddy, soyabean, groundnut, mustard, sunflower, castor etc. For different type of pest control lick bugs, borer, beetle, coworm Caterpillar, Semilopper etc. Average dosage is 500 ml.- 625 ml. formulation in dilution 500-1000 water per hectare.

SYMPTOMS OF POISONERS : The early symptoms may be any combination of headache, giddiness, vertigo, nausea, vomiting, excessive, lacrimation and salivation.

FIRST AID MEASURES : + Wash contaminated skin and irrigate eyes with normal saline. + Gastric lavage with 5% sodium bicarbonate may be given if swallowed.

ANTIDOTE :

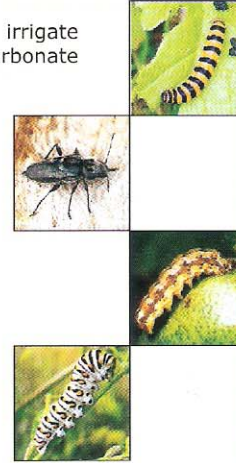
- + Atropinise the patient immediately and maintain full atropinization by repeated doses of 2-4 mg. 5 to 10 minutes interval.
- + Dissolve 1-2 gm. of 2 PAM into 10 ml. distilled water and its injected Intravenously very slowly for 10-15 minutes.

STORAGE CONDITIONS : The pesticides shall be stored in a separate rooms away from other Articles premises meant for storing the insecticides shall be well built, dry, well lit and ventilated and of sufficient dimension to avoid contamination With vapors.

PRECAUTIONS BY USER : Avoid inhalation and skin contact and. The user should use full protective clothing with rubber gloves, both either faces should be dust mask overall or rubber apron hood hat.

Packing : standard packing and match to statutory requirement for product and as per customer requirement.

NOTE : Information given above are the guidelines best to our knowledge. Recommendation made are without any guarantee since condition use are not in our control.



NTHION 50 EC

INTRODUCTION: NTHION 50% EC is a safe contact and stomach Emulsifiable concentrate Insecticide based on Malathion tech as 50 % A .I

RECOMMNDATIONS : For the control of Pest in Paddy, Sorghum, Pulses, Groundnut, Mustard, Potato, Banana. For different type in Case Worm, Midge, Borer, Weevil, Saw fly, Moth, Winged bug etc.. at the dosage of 500 ml. 750 ml. water/ hectare.

ANTIDOTE :

- + Atropinize the patient immediately maintain full atropinization by repeated doses.
- + Dissolve 1-2 gram 2 PAM in 10 ml. distilled water and inject intravenously Very slowly for 10-15, minutes of 2 to 4 mg. at 5 to 10 minutes interval.

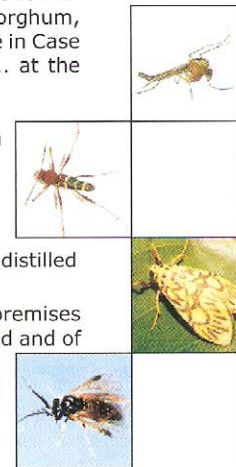
STORAGE CONDITIONS : Dissolve 1-2 gm. 2 PAM in 10 ml. distilled water and inject intravenously very slowly for 10-15 minutes.

The packages containing the insecticides shall be stored in separate rooms & premises meant for storing the product shall be well built, dry, cool well-lit and ventilated and of sufficient dimensions to avoid contamination with vapor.

PACKING : Standard packing and match to statutory requirement for product and as per customer requirement.

NOTE : Information given above are the guidelines best to our knowledge.

Recommendation made are without any guarantee since condition use are not in our control.



Our Other Products :

1. **NORDENT** - Rodent Control
2. **NOFLEE** - PROPOXUR 20%EC
3. **SEED B. OL** - DELTAMETHRIN 2.5% WP

Manufactured by
CHEMET WETS & FLOWS P. LTD.
D/63, Silver Arc, Nr. Gujarat College Rly. Crossing, Ellisbridge,
Ahmedabad-380 006. Gujarat, India. + www.chemet.in

Distribution by :

