



NEXUS 25 EC

INTRODUCTIN: Nexus 25% e.c. it is highly active synthetic pyrethroid insecticide based on cypermethrin tech. containing its 25% as its active ingredient and balance adjuvants.

RECOMMENDATIONS : For the control of pest in like Bollworms. Jassids. Thrips. Shoot. & Epilachna grub.at the dosage of 150-200 ml Formulation Dilution as 500 ltr. Water for hectars. Observe the waiting period strictly.

EQUIPMENT USED IN APPLICATION : Knapsack sprayer, foot sprayer, compression knapsack sprayer, compression knapsack battery sprayer and as-htp power sprayer etc.

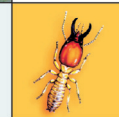
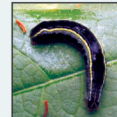
ANTIDOTE : Treat Symptomatically.

PRECAUTIONS : Avoid inhalation and skin contact and. The user should use full protective clothing with rubber gloves, both either Faces should be dust mask overall or rubber apron hood hat.

STORAGE CONDITIONS : The pesticides shall be stored in a separate rooms away form other articles premises meant for storage the insecticides shall be well built, Dry, well, lit, and ventilated and of sufficient dimension to avoid contamination with vapours.

PACKING : Standard packing and match to statutory requirement for product and as per customer requirement.

NOTE : Information given above are the guidelines best to our knowledge. Recommendation made are without any guarantee since condition use are not in our control.



INSECT CONTROL