



PEST CONTROL



## NOFLEE 20 EC

### PROPOXUR 20%EC

**NOFLEE 20 EC** is a very highly effective insecticide for the control of a wide variety of household pests. It is used especially for the control of crawling pests such as cockroaches, bedbugs, ants, silver fishes, fleas, spiders, earwings, millipedes, ticks, wasps, sow bugs (wood lice) and mites.

**Mode of Action :** **NOFLEE 20 EC** acts as a contact poison. Insects come in contact with its active ingredient while crawling/moving on the sprayed surface, ensuring fast and long lasting effect.

**Mode of Application :** 25 ml of **NOFLEE 20 EC** should be diluted in one liter of water and sprayed the rate of 50ml solution per square meter at places where insects hide.

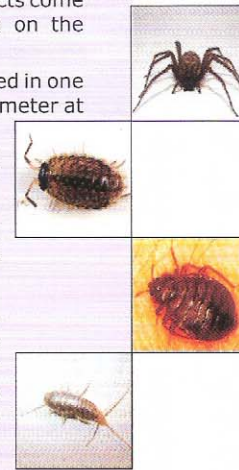
**Features :** **1.** Broad Spectrum activity **2.** Very strong flushing action **3.** Good knockdown activity **4.** Long residual activity. **5.** Very safe to humans and non-target animals.

**Precautions :** **1.** Store in a cool, dry place. **2.** Keep away from food and feed stuff. Avoid contact with skin. **3.** Do not smoke, eat, drink while spraying **4.** After application wash hands, face and contaminated skin area with soap and water.

**Antidote :** Atropinize the patient immediately and maintain full Atropinization by repeated dose of 2-4 mg of atropine sulphate intravenously at 5 to 10 minutes interval. As much as 25 to 50 gm of atropine may be required a day. The need for further atropine may be required in a day. The need for further atropine administration is guided by the continuance of symptoms. Extent of salivation is a useful criterion for dose adjustment. Do not use any oxymer such as 2 Pam. artificial respiration may be given, if needed.

**Packing Available :** Small pack to 200 liter bulk packing and as per customer requirement.

**Note :** Information given above are the guidelines best to our knowledge. Recommendation made are without any guarantee since condition use are not in our control.



## NCROCH GEL

**NCROCH GEL** is a new technology product, specific for cockroach control. The unique application method makes it a suitable product for managing cockroaches in vending machines. **NCROCH GEL** contains Imidaclopride 2.15% as the active ingredient and food bait matrix which attracts the cockroaches. **NCROCH GEL** has to be applied by the unique applicator gun and a needle. **NCROCH GEL** has attractant that lures cockroaches ensuring its consumption which kills cockroaches.

**Features of NCROCH GEL :-** **(1)** Odorless **(2)** Long duration of control up to 3 months **(3)** No need to vacate the house **(4)** Easy & safe application with low mammalian toxicity **(5)** Suitable for all complex conditions of premise **(6)** Low application dose.

**Mode of Action :** **NCROCH GEL** has an exclusive domino effect wherein delayed killing action enables one contaminated cockroach to kill many others.

**Mode of Application:** Few spots of 0.1g (5mm) of **NCROCH GEL** are made outside & few spots are made inside, after the back cover is unscrewed. About 8-12 spots are required per VM. Avoid placing gel on electrical parts (PCB) & area of the machines that get hot. **NCROCH GEL** needs to be replenished once a month. The repeat treatment spot consumption is based on the infestation level and not a fixed number.

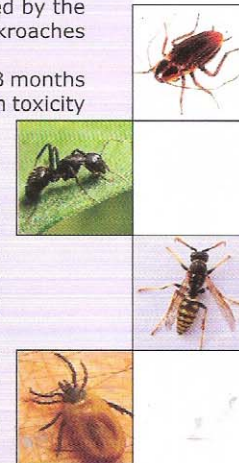
**Precautions :** Do not disturb or clean the gel spots during the cleaning operations. Do not apply the gel spot directly any food stuff or electrical parts. Do not apply the gel on the surfaces where it can get wiped off or washed off.

**Packing :** Standard packing and match to statutory requirement for product and as per customer requirement.

**NOTE :** Information given above are the guidelines best to our knowledge. Recommendation made are without any guarantee since condition use are not in our control.

### Our Other Products :

- 1. NOLAR** - Temephos 50% EC
- 2. N-CORE** - Deltamethrine 1.25% ULV
- 3. NT-QUITO** - Deltamethrine 2.5% SC



Distribution by :



Manufactured by  
**CHEMET WETS & FLOWS P. LTD.**  
D/63, Silver Arc, Nr. Gujarat College Rly. Crossing, Ellisbridge,  
Ahmedabad-380 006. Gujarat, India. + www.chemet.in

